

Historic, Archive Document

Do not assume content reflects current scientific knowledge, policies, or practices.

6237 1927

CATALOG OF
CUMBERLAND
NURSERIES



Located Between
MILLVILLE AND BRIDGETON, N. J.

Post Office Address
MILLVILLE, NEW JERSEY

INTRODUCTION



THIS BUSINESS, started seven years ago, has grown steadily and without a large appropriation for advertising.

For this we have to thank former customers and friends. We appreciate their kindness and hope to continually merit the good words they have spoken.

Our stock today is larger and better than it ever has been in the years past, and we know we can please anyone who intrusts their business to us.

Newer varieties of plants have been added from time to time until we can safely say we have most of the good and worth while plants.

We have endeavored to keep prices at a low figure for the quality of the stock offered.

We solicit your patronage.

Respectfully,

CUMBERLAND NURSERIES.

Post Office:

Millville N. J.

Telegraph and Telephone:

Bridgeton, N. J. 892-J-1.



An entrance to a New Jersey home

INSTRUCTIONS TO PURCHASERS

HOW TO FIGURE YOUR ORDER

One to four trees or plants of one variety sold at the each rate; 5 to 30 of one variety at the ten rate; 30 to 250 of one variety at the 100 rate; 250 or more at the 1000 rate.

ORDERS. Orders should be sent in just as soon as possible after receiving catalog. By placing orders early you are more certain of getting the varieties wanted, as late in the season we are usually sold out of some of the varieties. If ordered early we can reserve the stock until you want it shipped. We acknowledge receipt of all orders promptly.

SHIPPING SEASON. We begin filling orders about October 15th and continue digging and shipping during the entire fall, winter and spring until May 10th to 15th. We are sometimes delayed in January, February and the early part of March by freezing weather, but usually able to ship most of the time during these months.

THE PROPER PLANTING SEASON is during the months of February, March and April in the spring, and late October, November and December in Autumn.

Nursery stock is successfully planted any time during the winter months that ground is not hard frozen. In freezing weather the roots should be well protected in handling and not exposed to frost, however.

TERMS. Cash with order; but orders will be booked if one-fourth value is received with order, remainder to be sent before time of shipment. We allow a cash discount of 5 per cent on all orders, large or small, when cash accompanies order in full and when order is received by us on or before March 15th, after this date no cash discount is allowed. Remit by money order, registered letter, check or draft.

PACKING. We make no extra charge for boxing and packing, all stock is delivered f. o. b. train at prices quoted in this catalog. We use damp moss in packing all stock, which insures safe delivery.

WHEN YOU RECEIVE TWO CATALOGS, please hand one to your neighbor.



A SHADY RETREAT

SPECIFIED DATE OF SHIPPING. We want our customers, if possible when ordering to state the date they wish their order shipped and we will always ship on that date when possible, but cannot guarantee it, for instance, during autumn and spring we have at times stormy weather, and during winter months the soil is often frozen for a few days at a time. For these and other reasons beyond our control we cannot guarantee to ship on the specified date. We are always ready and do get right after filling your orders at the earliest moment possible, when weather conditions permit man and beast to be out of shelter. Send your order early and state date you wish it shipped.

GUARANTEE. We guarantee all stock to be strictly first class and true to name and will upon proper proof refund the purchase price, or replace any stock which proves otherwise. It is understood and agreed that we will not be held responsible for any greater sum than the cost of the stock, should any prove untrue. We strive to avoid mistakes and believe that we are as exact as any in the business.

TELEGRAPH OR TELEPHONE us at Bridgeton, N. J.

REFERENCE. Cumberland Trust Co., Bridgeton, N. J.

WE CANNOT GUARANTEE STOCK TO LIVE. We guarantee all stock we sell strictly first class and **TRUE-TO-NAME**, dug and packed properly for shipment; our prices compete with other reliable nurserymen, we do not charge a price for a tree, that should it die, we could replace it and then still make a profit. Stock often perishes when it is not properly planted and cultivated, also the severe cold and heavy storms of winter and droughts of spring and summer, which is liable to occur, will sometimes cause the best of stock to perish, which is no fault of ours.

It is impossible for us to guarantee trees and plants to live, as this altogether depends on weather conditions and how stock is planted and cared for after planting. The conditions which prevail after stock leaves our hands are such that it is just as impractical for a Nurseryman to guarantee a tree or plant to live as it would be for your best neighbor to sell you a horse or other live stock and guarantee it to live. We can only guarantee to send you good stock up to grade represented, full of life and true to name.

SHIPMENTS. After we deliver stock to the forwarding companies, and receive their receipt for the shipment in good condition, our responsibility ends. If stock is damaged while in transit, have agent at point of delivery to note such damage on freight or express bill, and present your claim for damage with said agent against forwarding companies. Keep copies of all papers. If adjustment is not made within a reasonable time take the matter up with us, we will endeavor to help you get a prompt adjustment.

SUBSTITUTION. When sold out of a variety of trees or plants we frankly say so and when you allow us to substitute we will send a variety similar to the one ordered, as good or better; as we know the many varieties our substitution, if any will be of advantage. Late in the season we are sometimes sold out of some varieties of stock, thus when sending your order it is to your advantage to say whether we may substitute or not, that we may get the order off promptly, before the season is too far advanced for successful planting. If you do not wish us to exercise this right please mark your order sheet plainly **NO SUBSTITUTION**.

CLAIMS. If any, must be made within five days from receipt of stock. We cannot become responsible for misfortune of stock caused by droughts, floods, frosts, insects, fire, etc., and by stock not being taken from the express office for several days after its arrival.

NOTICE OF SHIPMENT. Notice will be sent you when your order has been shipped.



DELICIOUS APPLE

APPLE TREES

BALDWIN. Large, roundish, skin deep red; flesh juicy, crisp, sub-acid, good flavor; very vigorous and productive. The best all around winter apple for New England and Northern States. Splendid keeper. December to March.

CRIMSON BEAUTY. Highly colored. Early. Good quality.

DELICIOUS. Winter apple. Keeps well, color red and yellow, fine grained; and quite juicy, flavor slightly acid, but very good. A good apple for either home use or market.

DUTCHESS. Very hardy grower, fruit medium size, red striped and the bright shaded with crimson. A very good early apple.

GRAVENSTEIN. Large. Red striped. Fall.

GRIMES GOLDEN. Very large, skin golden yellow; flesh tender and crisp. A very good fall apple. September to January. Grown in all sections of the country.

HENRY CLAY. Comes into bearing two to three days ahead of the Transparent. Very prolific, of large size, color green with slight blush. Fast becoming popular with commercial growers, some claim it pays better than Transparent.

HYSLOP. (Crab Apple). Large, handsome, crimson, splashed with dark red. Very prolific. September.

McIntosh. Medium size, nearly covered with a bright red flesh yellowish, tender, juicy, sub-acid. October to February.

MAIDEN BLUSH. One of the most beautiful; pale lemon with crimson cheek; flesh white, tender and crisp. October.

NORTHERN SPY. Large, bright, light red and yellow. Flesh juicy, rich, crisp, tender, aromatic, of good flavor. Tree strong grower. November to March.

PARAGON. Winter. A round apple, of extra large size; skin smooth, yellowish, covered with deep red, the general effect being dark red; flesh tender, tinged with yellow, crisp, sub-acid aromatic, of excellent quality in every way. Tree is vigorous and healthy and yields big crops every year.

RED ASTRACHAN. Large, nearly covered with deep crimson, juicy, rich, acid, beautiful. Tree a vigorous grower. A good bearer. August.

RED SIBERIAN. (Crab) About an inch in diameter, grows in clusters. Yellow with lively scarlet cheek.

ROME BEAUTY. Large; roundish, slightly conical, with bright red on a pale yellow ground; fine grained, juicy, good quality.

STAYMAN'S WINESAP. November to April, but keeps well in May. A profitable sort to grow for market, and the best for home use. Large in size, fine appearance, good flavor, juicy and crisp, color red. A great success.

WEALTHY. Fall. Almost solid red. Flesh white, tender, crisp, juicy fine grained. A good keeper.

WINTER BANANA. Size large, golden yellow and beautifully shaped with bright crimson red. Flesh lemon yellow, fine grained, sub-acid, rich, aromatic flavor. Season November to January.

WILLIAMS EARLY RED. Among the earliest to ripen and the largest or all early apples, a better name for it is "Big Red Apple." Flesh is white, and slightly tart, like Transparent, bears heavily on young trees.

WINESAP. Medium to large size. Red color; flesh yellow; firm crisp, with rich flavor quality very good. November to May.

YELLOW TRANSPARENT. Fruit medium to large, with a brilliant waxy skin; flesh is tender, crisp and juicy, color yellow. Summer apple growing offers a large profit to the fruit grower, and the Yellow Transparent is the variety to plant.

YORK IMPERIAL. A very good one, trees come into bearing early, and bears a good crop each year. Skin bright yellow covered with bright red and striped, very large. Suitable to any part of the country.

PRICES OF APPLE TREES

Two and Three Year

	each	10	100
First class, 5-6 feet	\$.50	\$4.00	\$35.00
Second class, 4-5 feet40	3.00	25.00
Third class, 3-4 feet30	2.00	18.00
Extra, Bearing age	1.00	9.00	80.00

One Year

5-6 feet	\$.40	\$3.50	\$30.00
4-5 feet35	3.00	25.00
3-4 feet30	2.50	18.00
2-3 feet25	2.00	15.00

PLUM TREES

ABUNDANCE. Fruit very large and showy; flesh light yellow, exceedingly juicy, tender and sweet. A good market variety.

BURBANK. Fruit very large; dark violet red; flesh juicy and pleasant. Ripens middle of August. Productive.

GREEN GAGE. Skin pale green. Excellent. An old standard variety.

GERMAN PRUNE. Dark purple or blue, juicy, rich, of best quality. September.

RED JUNE. Ripens first of August, fruit large, flesh light lemon yellow, half cling; slightly sub-acid, of good quality. Very productive.

SHROPSHIRE DAMSON. Medium size fruit, produced in thick cluster or groups. Tree a strong grower, and very productive of dark purple colored plums. October.

GOLDEN GAGE. Juicy, sweet; prolific, yellow flesh.

WICKSON. Large, sugary. Red, yellow flesh. Late.

First class80c each, \$7.00 per 10
Second class60c each, \$5.00 per 10

APRICOT TREES

EARLY GOLDEN. Large size, orange skin, and flesh. The best apricot. July.

4-5 feet	\$1.00 each, \$9.00 per 10
----------------	----------------------------

QUINCE TREES

CHAMPION. Tree strong grower; produces a good crop every year. Fruit large of good quality. Cooks as tender as an apple. October.

ORANGE. Good size. Heavy bearer. Flesh orange yellow.

2 year 4-5 feet	\$1.00 each. \$9.00 for 10
-----------------------	----------------------------



ELBERTA—The old reliable money-maker

PEACH TREES

We are offering only a limited number of varieties, ones that you can depend on giving you a good crop of fruit. We do not think it worth while to propagate a large number of varieties, when a few of the best varieties will make more money for our customers. The peach crop is quite sure if you give your trees proper attention. To succeed in growing fruit, first of all plant good trees, give them correct pruning, frequent spraying, proper cultivation, good fertilizing, careful picking and attractive packing; by so doing your orchard will give you profit year after year. Our peach trees are budded with buds cut from bearing orchards; we know they are true to name. For spraying instructions, consult your County Agent or Experiment Station in your state.

BELLE OF GEORGIA. Ripens here the first to fifteenth of August. Fruit is large, white with red cheek; flesh white, firm, of excellent flavor. Tree a rapid grower and very productive. One of the very best market sorts. Freestone.

CUMBERLAND. Similar to Carman. Better quality and freestone.

ECLIPSE. Yellow, freestone. Ripens with Hiley.

CHAMPION. A Western Peach of very large size and good quality, also noticeable for the regularity of its bearing. Skin is of a rich creamy white, with a red cheek; flesh creamy white, sweet and delicious, rich and juicy. A most profitable and good selling market peach.

ELBERTA. Mid-season. A valuable large peach, of good quality; fruit large, yellow with red cheek; juicy and extremely high flavored; flesh yellow; freestone. The leading market variety. Ripens here about the middle of August.

FOX SEEDLING. Freestone. Fruit is very large and of good quality and flavor. Carries long distances, a good market sort. Largely planted.

GREENSBORO. Large in size; white in color with a red cheek. Flesh rich and melting; very juicy; tree a strong grower.

HILEY. Ripens about a week before the Belle of Georgia, also a seedling of the Belle. Tree very hardy; a large creamy white peach with rich blush on sunny side; a long keeper and good shipper. Freestone.

IRON MOUNTAIN. Ripens September 1st. Freestone. Fruit is of large size, color white.

J. H. HALE. One of the best sorts for market or garden. Fruit is very large, round, quality excellent. Skin yellow finely colored, flesh yellow, sweet and melting. Ripens just before the Elberta. A very good one.

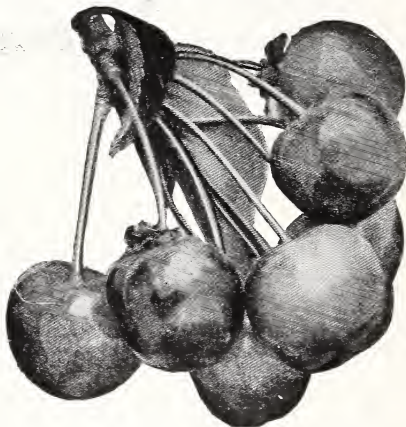
KRUMMEL. Freestone. Fruit is quite large, fine flavor, skin yellow, splashed with red. Fine for canning or preserving, largely planted by the commercial growers as with the garden planters.

ROCHESTER. Has the habits and characteristics of the Crawford but fully two weeks earlier. Yellow, freestone, good size, very sweet and fine fine flavor. Requires only half the usual amount of sugar for canning. Ripens about the middle of July.

PRICES OF PEACH TREES

5-6 feet	\$.35	\$3.00	\$25.00
4-5 feet30	2.50	20.00
3-4 feet25	2.00	18.00

CHERRY TREES



MONTMORENCY—Hardy and productive

SWEET CHERRIES

BLACK TARTARIAN. Black, very large, rich and sweet. Productive. Ripens last of June.

GOVERNOR WOOD. Yellow with red cheek; tender, rich, delicious, very fine, large, roundish, depresses at stem; productive, early.

NAPOLEON. Yellow, tinged with red. Good shipper.

SCHMIDT'S BIGGAREAU. Flesh tender, juicy, good flavor. Mahogany color.

	each	10	100	1000
2 year 4-5 feet first class	\$1.00	\$9.00	\$70.00	\$600.00
2 year 5-6 feet X	1.25	10.00	90.00	800.00

SOUR CHERRIES

EARLY RICHMOND. Medium to large. Dark red, juicy, good flavor. June.

MONTMORENCY. Medium to large. Dark red, juicy, good flavor. Late.

YELLOW SPANISH. Ripens early in June. Fruit large, color yellow. Tree vigorous grower.

2 year 3½-5 feet75c each; \$6.50 per 10

PEAR TREES

ANJOU. Large, handsome, yellow. Late Fall.

BARTLETT. Season last of August to September 15th. Good strong grower, flesh is white, fine grained, luscious, large and buttery, has a rich melting flavor and very sweet.

CLAPP'S FAVORITE. Summer. Fruit large, yellow lemon color, spotted with brown dots; flesh fine, rich and sweet. A very good one.

DUTCHESS. Strong grower, productive, not subject to blight. Fruit large, light green patched with russet, melting, juicy, sweet and good. October and November.

KIEFFER. One of the most prolific pears. It is an abundant and regular bearer. Good shipper. Fruit large, color yellow with red cheek. Will produce ten bushels of pears to the tree when ten years old, begins fruiting successfully when three years old. Season October. Kieffer, First class75c each; \$6.50 for 10

LINCOLN. Fruit large, clear yellow, sometimes blushed. Fine quality, good shipper, heavy cropper.

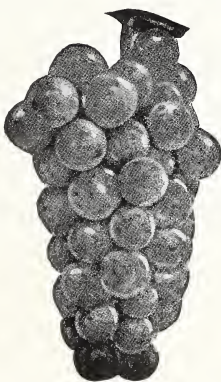
LAWRENCE. Medium, yellow with brown dots, melting, pleasant, aromatic. November and December.

SECKEL. Medium size, skin rich, yellowish brown with deep brownish red cheek when fully ripe; flesh very fine grained, sweet, exceedingly juicy, melting, buttery. One of the richest and highest flavored pears known. Summer.

First Class\$1.00 each, \$9.00 per 10
Second class75 each, 6.00 per 10



MOORE'S EARLY



NIAGARA

GRAPE VINES

AGAWAM. Deep red or maroon. Fruit large and meaty, borne in extra large, loose shouldered bunches. Vine strong grower, very healthy. Ripens with Concord. Has a delightful aromatic flavor.

BRIGHTON. One of the best of the red varieties; bunch variable in size; flesh tender and juicy. A good grower and bearer.

CACO. A new variety which is proving to be one of the best. It is wine-red with abundant bloom; the berries are very large; bunches medium in size, compact and of good form. Ripens almost with Concord, possibly a few days earlier, but so rich in sugar it is excellent in flavor, fully two weeks before fully ripe. 75c each.

CONCORD. The most popular black variety of grape in America. The bunch is large, shouldered and compact, skin is tender, flesh juicy and sweet. Succeeds in all parts of the country. Extremely productive, produces abundantly in nursery row on two-year vines.

DELAWARE. Vine moderately healthy and vigorous. Bunch small but compact, berries small to medium in size, red in color and of excellent flavor.

ELVIRA. Color white. Vine strong grower, large bunches.

IVES. Very hardy and productive. Ripens earlier than Concord and will hang on the vine until shriveled.

MOORE'S DIAMOND. Ripens early, just before Moore's Early. Prolific grower. Berries large greenish white, juicy and of good quality. Bunches are compact. A standard white grape.

MOORE'S EARLY. Ripens before Concord. Color of grapes deep black. Large and of best quality. Bunches hold together firmly. One of the best shippers. A profitable variety for either home use or market. Makes excellent wine. Very productive. Like Concord and Worden produces abundantly in the nursery row on 2-year-old vines. We consider it as good in every particular as Concord and for those seeking an early black grape it cannot be excelled. Ripens fully two weeks before Concord.

NIAGARA. The most popular white grape. Clusters large and compact; berry large, amber white with white bloom, thin skinned, tender pulp, sweet and luscious. Ripens in mid-season with Concord. Holds the same prominent position among the white grapes as does Moore's Early and Concord among the black grapes.

2 year No. 125c each, \$2.00 per 10, \$15.00 per 100



DOWNING GOOSEBERRIES

GOOSEBERRIES

DOWNING. One of the old reliable varieties. Fruit is quite large, pale green in color, and of splendid quality. Bushes are vigorous growers.

HOUGHTON. This variety rarely fails to produce a crop every year, and usually the bushes are loaded to the limit. The berries are of medium size, and the plants are extremely hardy and healthy.

	each	10	100
2 year No. 1	\$.25	\$2.00	\$15.00

BLACKBERRIES

BLOWERS. Claimed to be the hardiest and most productive. Large size, jet black; good shipper. Unexcelled productiveness are the main characteristics of this splendid new sort.

WARD. A healthy strong grower, producing fine, large fruit, black throughout, without core, and of excellent quality.

HIMALAYA. Late. Needs tying. Profitable.

	each	10	25	100	1000
1 year	\$.15	\$.60	\$1.25	\$4.00	\$30.00
2 year20	1.50	2.50	7.00	60.00



ST. REGIS—The best everbearing Raspberry

RASPBERRIES

Coming immediately after strawberries, when there is a dearth of other fresh fruit, raspberries are much sought after for planting in the garden and also in the field for market. They are easily cultivated and beds seldom require renewing. Their season of ripening is long and fruit always in demand. Plant in good soil and manure freely from time to time. Plant four feet apart each way. Cut out the old shoots each spring.

CUMBERLAND. Produces large jet black fruit, firm and of excellent quality; sweet and mild, ripening in midseason and continuing for two weeks. Extensively planted for commercial purposes and for table use.

CUTHBERT. The best red raspberry. Heavy yielder of large solid fruit. Plant is a very vigorous grower. Fine for market and table use.

ERSKINE PARK. A giant in growth and size of fruit. To get best results it is best to cut canes down to within a few inches of the ground each spring. As this variety is frequently lacking in pollen, it is always well to plant a few of the variety St. Regis near it. Color red.

PLUM FARMER. The largest of all black raspberries. Quality of fruit unsurpassed. Good for both home and market.

ST. REGIS. (Everbearing). Ripens with the earliest and continues on young canes until autumn. Color red, flesh firm and meaty. Largely planted.

PRICES OF ERSKINE PARK AND CUTHBERT RASPBERRIES

	each	10	25	100	1000
1 year	\$.12	\$.70	\$1.25	\$4.00	\$35.00
2 year.....	.16	1.25	2.25	7.00	60.00

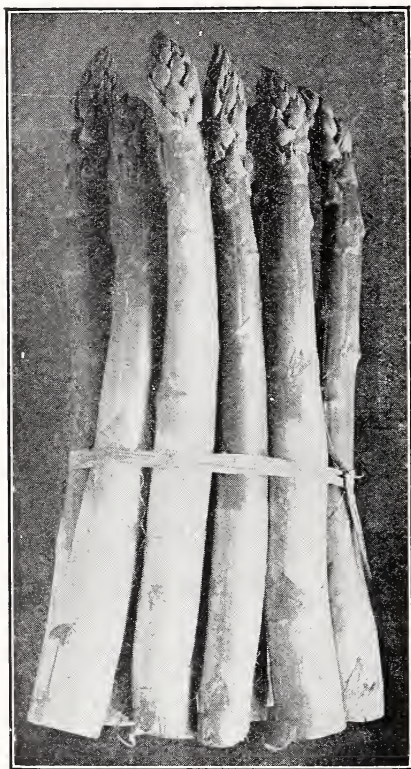
PRICES OF OTHER VARIETIES OF RASPBERRIES

	each	10	25	100	1000
1 year	\$.10	\$.60	\$1.00	\$3.00	\$25.00
2 year15	1.00	2.00	6.00	50.00

RHUBARB OR PIE PLANT

MYATT'S LINNEAEUS. Early, large, tender and of good quality.

	each	10	25	100	1000
2 year No. 1	\$.10	\$.90	\$2.00	\$6.00	\$50.00



Grow your own Asparagus

ASPARAGUS ROOTS

BARR'S MAMMOTH. Early and very large; makes a rapid growth. A general favorite.

CONOVER'S COLOSSAL. An old variety, well known in all localities. Large and makes a rapid growth. Very popular.

GIANT ARGENTEUIL. This variety is largely grown in France. Stalks are immense size, rich and tender. Earlier than the other varieties.

PALMETTO. Of southern origin. Very large and productive. Most extensively planted of all asparagus.

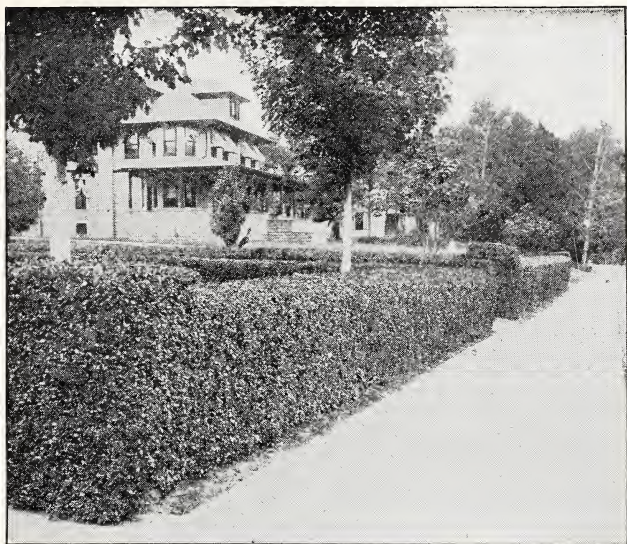
WASHINGTON A new variety, claimed by many to be the best one of them all.

PRICES OF WASHINGTON PEDIGREED ASPARAGUS ROOTS

	25	100	1000
2 year No. 1	\$1.00	\$2.50	\$15.00
1 year No. 180	1.25	8.00

PRICES OF OTHER VARIETIES OF ASPARAGUS ROOTS

	25	100	1000	10,000
2 year No. 1	\$.80	\$2.00	\$10.00	\$80.00
1 year No. 160	1.25	6.00	50.00



A well trimmed Privet Hedge

CALIFORNIA PRIVET

One of the leading hedge plants and undoubtedly the largest planted of them all; its foliage produces abundantly the deepest, richest green, almost an evergreen; does not shed its foliage until late winter and then only in an exposed condition. Very hardy, easily and quickly pruned, and you may shape it in any position desired by trimming. Plant 8 to 10 inches apart in the row. Dip the roots in water before planting; after plants are set cut them down to 12 inches from the surface of the ground, this will cause a thick new growth to start, and is very essential for a beautiful hedge, do not cut back again until they have made 10 inches of new growth, when cutting each time allow about 1 to 2 inches above where it was cut before until you get it the height desired. After planting spread barn-yard manure at surface of ground; keep free from weeds the first two years, by this time it will get its start, then nature will do the rest. Did you ever realize what an admiring and luxuriant privet hedge you could secure at a very small cost, and how much it would add to the value of your property? To find the exact number wanted, measure the space where it is to be planted and multiply the number of feet by 12 and divide by 10, this will give the exact number. Our privet is strictly first class, well branched and heavy rooted. Can be successfully set any month in the year that the soil is not frozen, except June, July and August.

All grades listed below are heavy rooted and well branched.

	10	100	1000
12 to 18 in.	\$.50	\$4.00	\$30.00
18 to 24 in.60	5.00	40.00
2 to 3 ft.80	6.00	50.00
3 to 4 ft.	1.00	7.00	65.00

GLOBE SHAPED PRIVET

This is California Privet carefully sheared in perfect balls.

Size 6 in. by 6 in.	\$.60	\$5.00
Size 8 in. by 8 in.75	7.00
Size 10 in. by 10 in.	1.00	9.00
Size 12 in. by 12 in.	1.50	10.00

AMOR RIVER PRIVET

	each	10	100
2 to 3 feet	\$.15	\$1.00	\$ 9.00
3 to 4 feet20	1.75	15.00
4 to 5 feet25	2.00	

REGEL PRIVET

	each	10	100
2 to 3 feet	\$.20	\$1.50	\$12.50
3 to 4 feet25	2.00	17.50

BARBERRY THUNBERGI

This is not the variety of Barberry which spreads wheat rust, and can safely be planted.

Planting instructions for Barberry are the same as for California Privet when planting it for a hedge, except that it should be set 12 to 15 inches apart. For lawn planting, instructions same as other shrubs.

For a low hedge Japanese Barberry Thunbergi stands at the head of the list, it succeeds without much attention, may be pruned or not just as the owner chooses, without pruning it will form a compact mass, so thick a cat can't get through. Barberry is harder than California Privet. Spring and summer leaves are very green and attractive; in autumn after most other shrubs are bare, its small oval leaves then assume rich crimson colors and the slender branches droop with their load of bright red berries which hang on until late winter. Owing to its dwarf habit or growing it is also extensively planted for borders, and single and bunched specimens on the lawns, no other shrub or hedge plant surpasses Barberry Thunbergi.

Our stock of Barberry has been twice transplanted, and is strictly first class, well branched and heavily rooted.

	each	10	100	1000
2 year 8 to 12 inches	\$.15	\$1.25	\$10.00	\$80.00
2 year 12 to 18 inches20	1.50	12.00	100.00
2 year 18 to 24 inches30	2.00	20.00	150.00
3 year 18 to 24 inches35	2.50	25.00	

BARBERRY THUNBERGI PURPUREUM. Purple Japan Barberry. 85c. each.

NUT TREES

Nut trees are valuable, useful and ornamental. No home should be without them. They are valuable as shade and ornamental trees, as well as the nuts they produce.

BUTTERNUT. Tree makes very rapid growth, and bears heavily of large, longish nuts. Very pleasing for its sweet, oily, nutritious kernel. 3 to 4 feet \$1.00 each.

ENGLISH WALNUT. Well known, justly popular, very hardy, will stand the extreme cold, produces abundantly. 3 to 4 ft. \$1.00 each.

JAPAN WALNUT. Very hardy, makes quick growth, bears abundantly when young, produces large nuts. 2 to 3 ft. \$1.00 each.

PECAN. Well known, justly popular. Very large nuts, 50 to the pound. 2 to 3 ft. \$1.00 each.

PEONIES

Strong plants, 3 to 5 eye divisions 50c each; \$4.00 for 10

Undivided clumps \$1.00 each; \$9.00 for 10

DELACHE. Rose. One of the best.

QUEEN VICTORIA. Medium early. Large full compact bloom, opens flesh white cream center changing to pure white.

FESTIVA MAXIMA. The best of all peonies. Large bloom, white, with here and there a fleck of crimson.

EDULIS SUPERBA. Early, rose pink, carmine striped. Very good.

FELIX CROUSSE. Brilliant red. Blooms freely.

DUCHESS DE NEMOURS. Pure white blooms, large and full double.

GOLDEN HARVEST. Double. Creamy yellow centre.



FRAU KARL DRUSCHKI ROSE

ROSES

Hybrid Perpetual or Summer Roses

2 yr. No. 1, 80c each; \$7.00 for 10.

FRAU KARL DRUSCHKI. Snow Queen. Large and fragrant. It is marvelous in its beauty in half opened bud, and in the snow-white of the full bloom. A good one. Summer and autumn bloomer.

GEO AHREND. A pink Druschki.

HUGH DICKSON. Crimson. Very hardy, blooms full, flowers large and fragrant. Finest rose of its color. Summer and autumn bloomer.

MAGNA CHARTA. Very fragrant; strong grower. One of the best.

Climbers and Ramblers

2 yr. No. 1 plants at 60c each; \$5.00 for 10

AMERICAN PILLAR. One of the most gorgeous climbers. Large bloom, apple blossom pink.

BABY RAMBLERS. Clear, brilliant ruby rose. blooms early in June and continues until frost. We have them red, white and pink.

BESS LOVETT. Is of strong growth with large glossy silver moon-like foliage. Very fragrant. The color is a clear bright red. Flowers are lavishly produced and borne on long stems.

CLIMBING AMERICAN BEAUTY. Plant a vigorous grower. Color same as the famous old American Beauty. Wonderfully free bloomer.

DOROTHY PERKINS. Rambler...In June and July this one produces immense trusses of delightful pink flowers. Hardest of all roses, makes 20 to 30 feet runners in one season.

DOROTHY PERKINS WHITE. Same as Pink Dorothy, except flowers are snow-white.

DOROTHY PERKINS RED. Excelsia. Red flowers.

DR. W. VAN. FLEET Delicate shell pink, mildly perfumed flowers and produced abundantly.

EMILY GRAY. Yellow

GARDENIA. Bright yellow. Cream color when opened.

MARY WALLACE. Pink. A Dr. Van Fleet hybrid. \$1.00 each.

PAULS SCARLET. H. W. Clear vivid, shining scarlet in large, semi-double flowers, which remain unusually long in good condition on the plants.

SILVER MOON. Large, single white flowers; good.

THOUSAND BEAUTIES. (Tausendschon) H. M. The buds on first opening are bright cherry pink, changing as they develop to lighter shades, and eventually to almost white.

Hybrid Teas or Everblooming

2 yr. No. 1, 80c each; \$7.00 for 10.

BETTY. Coppery rose overlaid with ruddy gold. Buds long and pointed. Stems long.

DUCHESS OF WELLINGTON. (H.T.) Large well-formed buds, opening to semi-double saffron-yellow flowers, stained with crimson and changing to lighter yellow.

ETOILE DE FRANCE. (H.T.) Well formed buds that develop into full open flowers of red and soft velvety crimson, shading to vivid cerise.

GEN. MACARTHUR. (H.T.) Brilliant, glowing crimson-scarlet. A splendid garden rose; very sweet scented. A favorite rose. Blooms early and almost continuously during summer months.

GRUSS AN TEPLITZ. Everblooming scarlet crimson. A strong grower. The best everbloomer of its color.

KAISERINE AUGUSTA VICTORIA. Flowers large and finely formed, borne singly on strong upright stems. Color pure white, shading to lemon with age.

KILLARNEY. Fine satiny pink. Perfectly hardy, robust grower. A constant bloomer.

KILLARNEY WHITE. Same habits as the Killarney Pink.

LA FRANCE. Rich satiny peach, changing to deep rose. Large. The sweetest of all everblooming roses.

LOS ANGELES. Flame pink. Buds long and pointed. Beautiful from the opening of the bud until the last petal drops.

LADY HILLINGDON. (T.) Clear apricot-yellow. Buds of remarkable quality and elegance.

LADY ASHTOWN. (H.T.) Pale carmine-pink, shaded to golden yellow at the base of the petals. Blooms are large, globular and well formed.

MRS. AARON WARD. Dark yellow almost orange. A beautiful variety.

MDME. BUTTERFLY. Harmony of bright pink, apricot and gold.

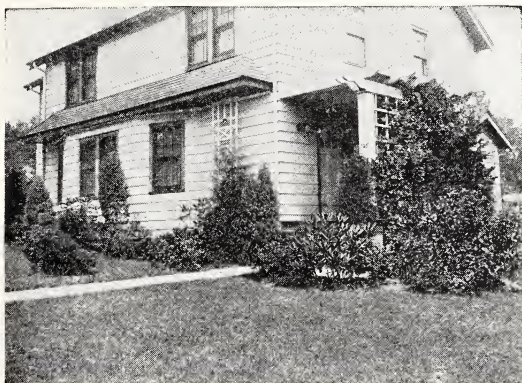
MDME CAROLINE TESTOUT. (H.T.) Broad petals of satiny rose, rounded flower, shaded darker at center and lighter edges.

OPHELIA. Cream white.

RADIANCE. (H.T.) Lovely light silvery pink flowers, with beautiful suffusion of deeper color. It may be relied upon to produce flowers under most all conditions.

RED RADIANCE. (H.T.) A deep red, with great globular flowers. Blooms until frost.

SUNBURST. Orange copper and golden yellow.



A well arranged planting

DECIDUOUS SHRUBS

AMORPHA FRUTICOSA. False Indigo. Spreading habit; chocolate colored flowers in June.

ACER PALMATUM. Japanese Maple. A small growing tree with green leaves. 3-4 feet, \$2.50 each.

ACER PALMATUM AUTROPURPUREUM. Red Japanese Maple. Well known small blood leaved tree. Ours are grafted and better than seedlings. 1½-2 feet, \$2.50 each.

AMYGDALUS NANA. Flowering Almond. Double flowers of pink or white in May. 2-3 feet, 50c each.

AZALEA NUDIFLORA. Pinxter Flower. Pink honeysuckle flowers in June.

AZALEA VISCOSA. Swamp Azalea. Fragrant white flowers in July.

BERBERIS THUNBERGI. Japanese Barberry. Fine for hedges or specimens. Yellow flowers, scarlet berries.

BERBERIS THUNBERGI AUTROPURPUREUM. Red Japanese Barberry. Similar to above. Having red leaves and scarlet berries. 85c. each.

BUDDLEIA VEITCHIANA. Butterfly Bush. Gray green foliage and lilac like flowers in August and September.

CALYCANTHUS FLORIDUS. Sweet Shrub. Reddish flowers, fragrant.

CARAGANA ARBORESCENS. Siberian Pea Tree. Fine clover like foliage and yellow pea shaped bloom.

CERCIS CANADENSIS. American Red Bud. Rosy pink flowers before the leaves appear. Grows to good size.

CERCIS CHINENSIS. Chinese Red Bud. Dwarf, bushy growth. Flowers brighter. Leaves darker green.

CLETHRA ALNIFOLIA. Summersweet. Flowers very sweet scented in August.

COLUTEA ARBORESCENS. Bladder Senna. Yellow flowers June-August. Curious bladder like seed vessels.

CORNUS ALBA. Coral Dogwood. White flowers; blue fruits; red bark.

CORNUS PANICULATA. Gray Dogwood. White flowers in May. Fruits white on red stems. Attractive.

CORNUS LUTEA. Golden Barked Dogwood. Valuable for its yellow bark in winter.

CORNUS SANGUINEA. Blood Twig Dogwood. Valuable for its scarlet bark in winter.

CYDONIA JAPONICA. Flowering Quince. Scarlet flowers in April and May before the leaves appear.

DEUTZIA CANDIDISSIMA. Snowflake Deutzia. Double white flowers in June.

DEUTZIA CRENATA FI. PL. Double Pink Deutzia. Flowers double pink.

DEUTZIA GRACILLIS. Slender Deutzia. Dwarf habit. Single white flowers.

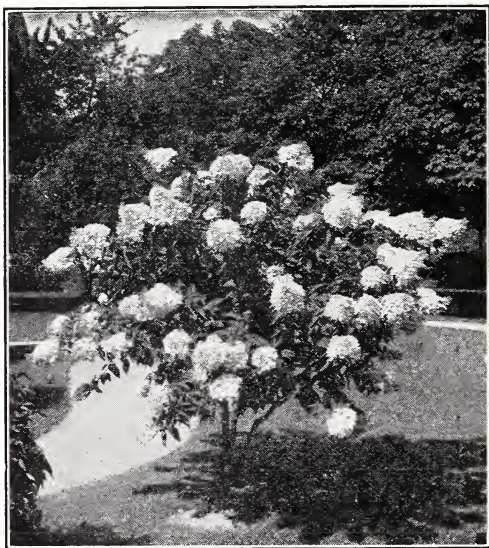
DEUTZIA PRIDE OF ROCHESTER. Large Flowered Deutzia. Flowers double white tinted pink.

ELEAGNUS LONGIPES. Cherry Eleagnus. Dark green leaves silvery reverse. Flowers yellow. Fruit scarlet, good size.

ELEAGNUS UMBELLATA. Autumn Eleagnus. Similar to the above. Stronger grower. Fruit ripens in fall.

EUONYMUS ALATUS. Winged Euonymus. Corky bark. Deep green foliage. Makes a fine specimen. 1½ feet, 50c. each.

EXOCHORDA GRANDIFLORA. Pearl Bush. Pure white single flowers in clusters in May. Good foliage.



HYDRANGEA P. G.

FORSYTHIA INTERMEDIA. Border Golden Bell. Bright yellow flowers in May before leaves appear. Strong grower.

FORSYTHIA SUSPENS. Weeping Forsythia. Flowers lighter colored. Branches pendulous.

FORSYTHIA VIRIDISSIMA. Green Barked Forsythia. Dwarf grower. Deep green bark and leaves.

HAMAMELIS VIRGINICA. Witch Hazel. Yellow flowers in October.

HIBISCUS. Mallow Marvels. Single red, white or pink flowers.

HIBISCUS SYRIACUS. Rose of Sharon. Single flowers in various colors.

HIBISCUS BOULE DE FEU. Double red flowers.

HIBISCUS ARDENS. Double lavender flowers.

HIBISCUS ELEGANTISSIMA. Double pink flowers.

HIBISCUS JOAN OF ARC. Double white flowers.

HYDRANGEA ARBORESCENS. Smooth Hydrangea... Single white flowers in July.

HYDRANGEA GRANDIFLORA. Hills of Snow. Snowball like bloom in June.

HYDRANGEA PANICULATA GRANDIFLORA. Pee Gee Hydrangea. Well known autumn flowering shrub.

JASMINUM NUDIFLORUM. Winter Jasmine. Yellow flowers in April before leaves appear.

KERRIA JAPONICA FL. PL. Double golden yellow flowers in June to September.

LESPEDEZA BICOLOR. Bush Clover. Pink pea shaped flower in fall.

LESPEDEZA FORMOSA. Bush Clover. Purple pea like bloom in fall.

LIGUSTRUM AMURENSE. Amoor River Privet. Strong growing privet with light green foliage. Makes good specimens.

LIGUSTRUM REGELIANUM. Regals Privet. Low spreading dark green foliage. Very desirable shrub.

LIGUSTRUM OVALIFOLIUM. California Privet. Most desirable hedge plant. Glossy green foliage, almost evergreen.

LIGUSTRUM OVALIFOLIUM AUREA. Golden Privet. Not so strong a grower as any of the above privets. Leaves golden variegated. 1 foot, 25c each.

LONICERA BELLA ALBIDA. (White Bell Honeysuckle) Vigorous grower. Flowers white.

LONICERA FRAGRANTISSIMA. Fragrant, blooms very early, sometimes in winter. Curious twin shaped fruits.

LONICERA MACKII. Amur Honeysuckle. Large white flowers in June. Scarlet berries until winter.

LONICERA MORROWI ALBA. Morrows Honeysuckle. White flowers in June. Red fruits. Good foliage.

LONICERA MORROWI. Pink and blush flowers in June. Red berries.

OXYDENDRON ARBOREUM. Sourwood. Graceful panicles of white flowers in August. Good dark green foliage. Brilliant autumn coloring. 3-4 feet, 75c each; 4-5 feet, \$1.00 each.

PHILADELPHUS BOUQUET BLANC. Mock Orange. Dwarf habit. Blooms freely. 2-3 feet, 50c each.

PHILADELPHUS CORONARIUS. Sweet Mock Orange. Creamy white fragrant flowers in May and June.

PHILADELPHUS CORONARIUS AUREA. Golden Leaf Mock Orange. Flowers similar to above.

PHILADELPHUS GORDONIANA. Gordon Mock Orange. Large white flowers; slightly fragrant; gray bark. June and July.

PHILADELPHUS GRANDIFLORA. Large Flowered Mock Orange. White flowers. Strong upright grower.

PHILADELPHUS VIRGINALIS. Virginal Mock Orange. Beautiful semi-double flowers. Valuable. 2-3 feet, 50c each.

PHOTINIA VILLOSA. Red Berried Photinia. Splendid foliage; good grower. Flowers white. Red berries until frost. 4-5 ft., 75c.

PRUNUS TRILOBA. Double Flowering Plum. Attractive double pink blossoms in abundance. April-May. 2-3 ft., 50c; 3-4 ft., 75c.

RHODOTYPHUS KERRIODES. Jetbead. Pure white single flowers in May-June. Pleasing light green foliage. Black berries. 2-3 ft., 50c each.

ROSA RUGOSA. Red Rugosa Rose. Pink flowers June-July. Rich green foliage and large red fruits.

SORBARIA AITCHISONI. Kashmir False Spirea. Graceful foliage and spikes of white bloom. July-September.

SORBARIA SORBIFOLIA. Ural False Spirea. Fluffy heads of bloom in June-August.

SPIREA ANTHONY WATERER. Deep rose pink flowers blooming nearly all year. Dwarf growing. 1½ ft., 35c; 2-3 ft., 50c each.

SPIREA FROEBELIA. Froebels Spirea. Habit of growth similar to above. Foliage slightly different. Flowers darker. 1½ ft., 35c;

SPIREA BETHLEMITE. Flowers similar to Billardi. Leaves darker.

SPIREA BILLIARDI. Billiards Spirea. Upright bush. Spikes of rosy pink flowers.

SPIREA BILLIARDI ALBA. Similar to above. White flowers.

SPIREA PRUNIFOLIA. Bridal Wreath. Double white daisy like bloom. Shiny plum like leaves.



A little planting makes a big improvement

SPIREA REEVESIANA. Reeves Spirea. More upright in habit than Van Houttei. Flowers white in clusters.

SPIREA THUNBERGI. Thunbergi Spirea. Dwarf in habit. Very fine light green foliage. Flowers white before leaves.

SPIREA VAN HOUTTEI. Van Houttei Spirea. Branches weeping. White flowers in abundance. The best of the spireas.

SYMPHORICARPUS RACEMOSUS. White Snowberry. Dwarf grower. Attractive habit. White flowers.

SYMPHORICARPUS VULGARIS. Red Snowberry. More bushy than preceding. Red berries through winter.

SYRINGA CHINENSIS. Chinese Lilac. Slender branches. Violet flowers in May. Blooms early.

SYRINGA PERSICA. Persian Lilac. Purple and white varieties. Similar to Chinensis.

SYRINGA VULGARIS. Common Purple Lilac. Well known shrub should be planted around every home.

SYRINGA VULGARIS ALBA. White flowered form of above.

SYRINGA VULGARIS. French varieties. 2-3 ft., 75c; 3-4 ft., \$1.00; 4-5 ft., \$1.25 each.

Chas. X. Single, reddish purple.

Ludwig Spaeth. Single, red.

Marie le Graye. Single, white.

Mme. Lemoine. Double, white.

Wm. Robinson. Double, violet pink.

Hugo Koster. Blue.

TAMARIX AFRICANA. African Tamarix. Feathery dark green foliage. Pink flowers in April-May.

TAMARIX INDICA. Indian Tamarix. Tall grower. dark green foliage, light pink flowers. June.

TAMARIX ODESSANA. Odessa Tamarix. Bluish green foliage and pale pink flowers. Late.

VIBURNUM DENTATUM. Arrow Wood. White flowers in clusters. Blue black berries.

VIBURNUM OPULIS. European Cranberry Bush. White flowers and red berries.

VIBURNUM STERILIS. Snowball. Well known shrub, in much demand

VIBURNUM PLICATUM. Japanese Snowball. Leaves dark green, rugose. Flowers creamy white, fading white.

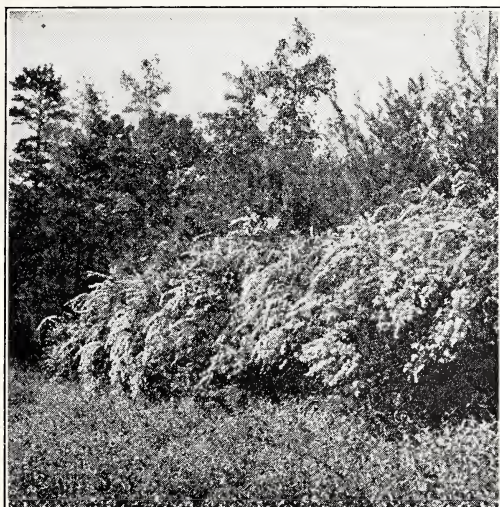
WEIGELA AMABILIS Rose Weigela. Pink and white flowers. Strong growing shrub.

WEIGELA EVA RATHKE. Crimson Weigela. Dwarf grower. Flowers Abundant.

WEIGELA FLORIBUNDA. Dark red flowers; tall grower desirable.

WEIGELA ROSEA. Pink Weigela. Rose colored bloom. Dwarf grower.

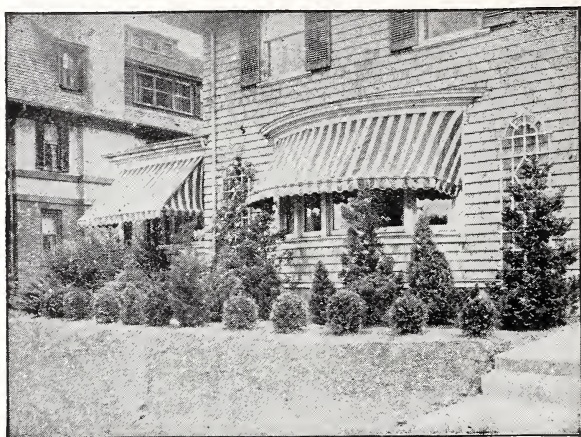
WEIGELA VARIEGATA. Rose colored bloom. Variegated leaves.



SPIREA VAN HOUTTE

Prices of Shrubs unless noted.

	each	10	100
12 to 18 inch	\$.20	\$1.50	\$12.50
18 to 24 inch25	2.00	15.00
2 to 3 feet35	3.00	25.00
3 to 4 feet50	4.00	35.00
4 to 5 feet75	6.00	50.00
Azalea Nudiflora and Azalea Viscosa			
12 to 15 inch50	4.00	
15 to 18 inch75	6.50	
Cydonia Japonica			
12 to 18 inch35	3.00	
18 to 24 inch50	4.00	
Deutzia Gracilis			
12 to 18 inch25	2.00	
18 to 24 inch35	3.00	
Hydrangea P. G.			
18 to 24 inch35	3.00	
2 to 3 feet50	4.00	
Hydrangea Hills of Snow			
18 to 24 inch50		
2 to 3 feet75		
Hydrangea Otaksa			
10 to 12 inch50	4.00	
Philadelphus Cor. Aureum.			
18 to 24 inch50	4.00	
2 to 3 feet75	6.50	
Spirea Thunbergii			
18 to 24 inch35	3.00	
2 to 3 feet50	4.00	
Viburnum Plicatum.			
18 to 24 inch75		
2 to 3 feet	1.00		
Weigela Eva Rathke			
18 to 24 inch35	3.00	



A foundation planting of Evergreens

EVERGREENS

ABELIA GRANDIFLORA. Bush Arbutus. Dwarf. Glossy green foliage. Blooms throughout summer.

AZALEA AMOENA. Bright rosy purple flowers in clusters. Blooms early.

AZALEA HINODEGIRI. Beautiful red flowers in early spring. Light green foliage.

BIOTA ORIENTALIS. Oriental Arbor Vitae. Rather stiff, columnar habit, light green foliage, bronze in winter.

BIOTA ORIENTALIS NANA. Berckman's Golden Arborvitae. A gem for dwarf planting; compact roundish shape; warm golden yellow foliage. Compact, columnar.

BUXUS SEMPERVIRENS. Boxwood. Bright, glossy green leaves. Can be trimmed to formal shapes.

BUXUS SUFFRUTICOSA. Dwarf Box. Useful for hedging.

COTONEASTER HORIZONTALIS. Rock Cotoneaster. Small box like leaves. Red berries. Attractive.

EUONYMOUS JAPONICA. Evergreen Burning Bush. Lustrous, deep green leaves. Upright habit.

EUONYMOUS JAPONICA AUREA MARGINATUS. Leaves edged and marked golden.

EUONYMOUS JAPONICA AUREA VARIEGATUS. Leaves marked golden in center.

EUONYMOUS RADICANS. Winter Creeper. Leaves green. Climbing habit.

EUONYMOUS RADICANS VARIEGATA. Leaves variegated white. Climbing habit.

EUONYMOUS VEGETUS. Big Leaf Winter Creeper. Leaves dark green.

ILEX CRENATA. Japanese Holly. Box like leaves, rich, deep green. Black berries.

ILEX OPACA. American Holly. Does best in moist partly shaded places.

JUNIPERUS PFITZERIANA. Pfitzers Juniper. Broad bushy habit. Gray green, feathery foliage. A most adaptable evergreen.

JUNIPERUS CANADENSIS. Canada Juniper. Forms a low spreading bush. Leaves dark above, silvery beneath.

JUNIPERUS HIBERNICA. Irish Juniper. A very narrow columnar evergreen. Silvery foliage.

JUNIPERUS SUECICA. Swedish Juniper. Dwarfier than Hibernica. Light green foliage.

JUNIPERUS EXCELSA STRICTA. Greek Juniper. Dwarf well shaped pyramid. Gray green silvery foliage. Desirable.

JUNIPERUS VIRGINIANA. Red Cedar. Well known, tall growing. Various forms of foliage.

LEUCOTHOE CATESBAEI. Drooping Leucothoe. Handsome lustrous leaves. Rich autumn coloring. Splendid for under planting.

LONICERA NITIDA. Evergreen Bush Honeysuckle. Dark privet like leaves.

MAHONIA AQUIFOLIA. Holly leaved Mahonia. Dwarf grower. Holly like leaves.

PICEA CANADENSIS. White Spruce. Silvery foliage. Makes shapely plants.

PICEA EXCELSA. Norway Spruce. Well known, rapid growing evergreen.

PICEA PUNGENS. Colorado Spruce. Needles stiffer than Norway. Makes finely shaped specimens.

PINUS DENSIFLORA. Japanese Red Pine. Foliage dark green. Very desirable.

PINUS MUGHUS. Mugho Pine. Very dwarf, round topped plant. Useful for foundation work.

PINUS NIGRA AUSTRIACA. Austrian Pine. Vigorous dense growing pine.

PINUS RESINOSA. Norway Red Pine. Lighter green leaves than densiflora. Softer foliage. Good symmetrical grower.

PINUS STROBUS. White Pine. Silvery soft foliage. Beautiful upright growing tree. Very picturesque.

PINUS SYLVESTRIS. Scotch Pine. Very handsome tree with dark green foliage; slightly twisted.

PSEUDOTSUGA DOUGLASI. Douglas Fir. Dark bluish green foliage. A very handsome tree.

RETINOSPORA ERICOIDES. Heath Retinospora. Has heather like leaves. Forms a broad conical bush.

RETINOSPORA PISIFERA. Sawara Cypress. Open pyramidal form. Quick grower.

RETINOSPORA PISIFERA AUREA. Golden Sawara Cypress. Golden foliage.

RETINOSPORA PLUMOSA. Green Plume Cypress. Fine dense foliage. Adapted to shearing into formal shapes.

RETINOSPORA PLUMOSA AUREA. Golden Plume Cypress. Similar to above. Golden foliage.

RETINOSPORA PLUMOSA LUTESCENS. Dwarf Gold Plume Cypress. Slow growing. Fine for base planting.

RETINOSPORA SQUARROSA VEITCHI. Veitch Moss Cypress. Very soft blue green foliage. Broadly pyramidal in shape.

RHODODENDRON MAXIMUM. Rosebay Rhododendron. Large, handsome foliage. Very effective in clumps. Pink and white flowers.

TAXUS BACCATA REPANDENS. Spreading English Yew. Dark green foliage. Low spreading plant.

TAXUS CANADENSIS. Canada Yew. Dwarf spreading habit. Dark green foliage. Good for base planting.

TAXUS CUSPIDATA. Spreading Japanese Yew. Rich dark green leaves. Slow grower. Broad vase shaped form.

THUJA OCCIDENTALIS. American Arborvitae. Slender pyramid with broad base. Bronzy winter coloring.

THUJA OCCIDENTALIS COMPACTA. Parsons' Arborvitae. Almost globe shaped. Bright foliage.

THUJA OCCIDENTALIS ELLWANGERIANA. Tom Thumb Arborvitae. Soft heather like leaves. Broad globular form.

THUJA OCCIDENTALIS HOVEYI. Hovey's Arborvitae. Bright green leaves. Oval shape.

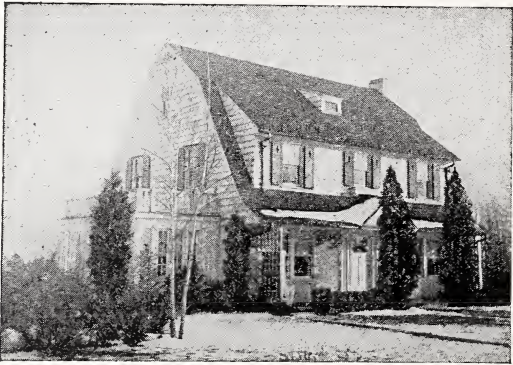
THUJA OCCIDENTALIS LUTEA. George Peabody Arborvitae. Golden yellow leaves. Medium grower. Pyramidal form.

THUJA OCCIDENTALIS PYRAMIDALIS. Pyramidal Arborvitae. Bright green foliage. Upright habit. Best of type.

THUJA OCCIDENTALIS ROSENTHALI. Rosenthal's Arborvitae. Dark green foliage. Dense rugged grower.

THUJA OCCIDENTALIS WARREANA. Siberian Arborvitae. Heavy dark green foliage. Conical shape.

TSUGA CANADENSIS. Canada Hemlock. Graceful spreading branches. Very well known.



Evergreens lend life to dead winter

Prices of Evergreens

	each	10
Abelia Grandiflora, 12 to 18 inch	\$1.00	
Azalea Amoena, 12 to 15 inch	1.50	
Azalea Hinodegiri, 12 to 15 inch	1.75	
Biota Orientalis		
18 to 24 inch	1.00	9.00
24 to 30 inch	1.50	12.50
30 to 36 inch	2.00	17.50
3 to 4 feet	3.00	27.50
4 to 5 feet	4.00	35.00
Biota Orientalis Nana		
10 to 12 inch	1.50	
12 to 15 inch	2.00	
Buxus Sempervirens		
12 to 15 inch	1.50	12.50
15 to 18 inch	2.00	17.50
18 to 24 inch	2.50	
Buxus Suffruticosa		
3 to 4 inch		1.50
4 to 6 inch		2.50
Cotoneaster Horizontalis, 18 to 24 inch	1.50	
Euonymous Japonica		
12 to 15 inch75	7.00
15 to 18 inch	1.00	9.00
Euonymous Aurea Marginiatus, 12 to 15 inch	1.00	
Euonymous Aurea Variegatus, 10 to 12 inch	1.00	
Euonymous Radicans, 12 to 18 inch75	6.50
Euonymous Radicans Variegated, 12 to 18 inch75	6.50
Euonymous Vegetus, 18 to 24 inch	1.50	
Ilex Crenata		
12 to 15 inch	1.00	9.00
15 to 18 inch	1.50	14.00
Ilex Opaca		
18 to 24 inch	1.50	
2 to 3 feet	2.00	
3 to 4 feet	3.00	
Juniperus Canadensis		
12 to 15 inch	1.25	
15 to 18 inch	1.50	
Juniperus Pfitzeriana, 18 to 24 inch	2.50	
Juniperus Hibernica, 18 to 24 inch	1.50	14.00
Juniperus Suecica, 15 to 18 inch	1.75	
Juniperus Stricta		
10 to 12 inch	1.25	
12 to 15 inch	1.75	
15 to 18 inch	2.50	



Good stock and careful planting makes this

Juniperus Virginiana	each	10
3 to 4 feet	3.50	
4 to 5 feet	5.00	
Leucothoe Catesbaei		
15 to 18 inch	1.50	14.00
18 to 24 inch	1.75	16.00
Lonicera Nitida		
10 to 12 inch50	4.00
12 to 18 inch75	6.50
Mahonia Aquifolium		
12 to 18 inch	1.00	9.00
18 to 24 inch	1.50	14.00
Picea Canadensis		
18 to 24 inch	1.50	14.00
24 to 30 inch	2.00	18.00
Picea Excelsa		
18 to 24 inch	1.50	14.00
24 to 30 inch	2.00	18.00
30 to 36 inch	2.50	22.50
Picea Pungens		
24 to 30 inch	2.50	
30 to 36 inch	3.00	
Pinus Densiflora		
24 to 30 inch	2.00	
30 to 36 inch	2.50	
Pinus Mughus		
12 to 18 inch	2.00	
18 to 24 inch	3.00	
Pinus Austriaca		
18 to 24 inch	2.00	17.50
24 to 30 inch	2.50	22.50
Pinus Resinosa, 24 to 30 inch	2.00	17.50
Pinus Strobus		
24 to 30 inch	2.00	17.50
30 to 36 inch	2.50	22.50
3 to 4 feet	3.00	

Pinus Sylvestris	each	10
18 to 24 inch	1.50	14.00
24 to 30 inch	2.00	17.50
3 to 4 feet	3.00	
Pseudotsuga Douglasi		
18 to 24 inch	2.00	17.50
24 to 30 inch	2.50	22.50
Retinospora Ericoides		
15 to 18 inch	1.50	
18 to 24 inch	2.00	
Retinospora Picifera		
18 to 24 inch	2.00	
24 to 30 inch	3.00	
Retinospora Picifera Aurea		
18 to 24 inch	2.25	
24 to 30 inch	3.00	
Retinospora Plumosa		
18 to 24 inch	2.25	
24 to 30 inch	3.00	
Retinospora Plumosa Aurea		
18 to 24 inch	2.25	
24 to 30 inch	3.00	
Retinospora Plumosa Lutescens		
12 to 15 inch	1.75	
15 to 18 inch	2.50	
Retinospora Squarrosa Veitchi		
18 to 24 inch	2.50	
Rhododendron Maximum		
18 to 24 inch	2.50	22.50
24 to 30 inch	3.00	27.50
Taxus Canadensis		
12 to 15 inch	1.75	
15 to 18 inch	2.50	
Taxus Cuspidata		
12 to 15 inch	1.75	16.50
15 to 18 inch	2.50	
Taxus Repandens		
12 to 15 inch	1.75	16.50
15 to 18 inch	2.50	
Thuja Occidentalis		
18 to 24 inch	1.50	14.00
24 to 30 inch	2.00	17.50
30 to 36 inch	2.50	22.50
Thuja Occidentalis Compacta		
12 to 15 inch	1.50	14.00
15 to 18 inch	2.00	17.50
18 to 24 inch	2.50	
Thuja Occidentalis Globoso		
12 to 15 inch	1.50	14.00
15 to 18 inch	2.00	17.50
18 to 24 inch	2.50	
Thuja Occidentalis Hoveys		
12 to 15 inch	1.50	
15 to 18 inch	2.00	
18 to 24 inch	2.50	
Thuja Occidentalis Lutea		
15 to 18 inch	1.50	14.00
18 to 24 inch	2.00	17.50
Thuja Occidentalis Pyramidalis		
18 to 24 inch	1.75	16.50
24 to 30 inch	2.25	20.00
30 to 36 inch	2.75	25.00
Thuja Occidentalis Rosenthali		
15 to 18 inch	1.75	
18 to 24 inch	2.50	
Thuja Occidentalis Warreana		
15 to 18 inch	1.75	
18 to 24 inch	2.50	
Tsuga Canadensis		
18 to 24 inch	2.00	
24 to 30 inch	2.75	
30 to 36 inch	3.50	



A Lombardy Poplar Screen

DECIDUOUS TREES

ACER DASYCARPUM. Silver Maple. Quick growing graceful shade tree. Leaves silvery beneath.

ACER NEGUNDO. Box Elder. Will grow in any situation. Desirable.

ACER PLATANOIDES. Norway Maple. Dense spreading tree. Most popular street tree.

ACER PSEUDO PLATANUS. Sycamore Maple. Valuable at sea shore.

ACER RUBRUM. Scarlet Maple. Has red bloom in early spring. Vivid fall coloring.

ACER SACCHARUM. Sugar Maple. Lighter foliage and more upright grower than Norway Maple.

AESCULIS HIPPOCASTANUM. Horse Chestnut. Slow grower. Very attractive in bloom.

AMYGDALUS PERSICA. Double Flowering Peach. Very attractive red, white and pink flowering trees for lawns.

BETULA ALBA. White Birch. A very desirable tree for lawn planting. White bark in winter.

CATALPA BUNGEII. Umbrella Catalpa. Popular round headed tree.

CELTIS OCCIDENTALIS. Hackberry. Similar foliage and habit to elms. Not so strong a grower.

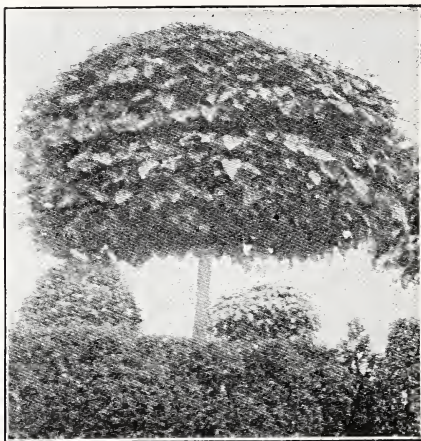
CORNUS FLORIDA. White Flowering Dogwood. Low growing trees having white bloom in spring.

CORNUS FLORIDA RUBRUM. Pink Flowering Dogwood. Similar to above. Flowers pink. A wonderfully effective tree.

FAGUS SYLVATICA. English Beech. Tree with dense green foliage. Slow grower. Broad pyramidal outline.

FAGUS SYLVATICA RIVERSI. Rivers Beech. More upright in habit than type, with purple foliage.

FAGUS SYLVATICA ASPLENFOLIA. Fern Leaved Beech. Cut leaved foliage. Should be branched low.



CATALPA BUNGEI

FAGUS SYLVATICA PENDULA. Weeping Beech. Tall growing tree with very pendulous branches.

FRAXINUS AMERICANA. American Ash. Fairly rapid grower. Good fall coloring. Likes moist situations.

FRAXINUS ORNUS. European Flowering Ash. Low growing tree. Fragrant feathery bloom in spring.

GINKGO BILOBA. Maidenhair Tree. Picturesque tree with leaves shaped like maidenhair fern.

LARIX LEPTOLEPSIS. Japanese Larch. Fast growing tree with evergreen like foliage.

LIQUIDAMBER STRYACIFLUA. Sweet Gum. Beautiful fall coloring. Grows well in moist soils.

LIRIODENDRON TULIPIFERA. Tulip Tree. A quick growing tree with shiny green foliage and yellow tulip like flowers.

MALUS (Floribunda). Japanese flowering Crab.

Atrosanguinea. Red flowers.

Parkmanni. Semi-double. Rosy pink.

Ioensis Plena. Betchel's Crab. Double, rose bloom.

Scheideckeri. Double pink.

MORUS ALBA. Russian Mulberry. A small growing tree with fine foliage and bearing fruit. Suitable for chicken runs.

MORUS ALBA PENDULA. Weeping Mulberry. The finest of the weeping trees. Wonderful foliage and habit.

PLATANUS ORIENTALIS. Oriental Plane. A quick growing tree with maple like leaves. Suitable for street planting.

POPULUS ALBA. Silver Leaved Poplar. Useful for seashore planting.

POPULUS MONILIFERA. Carolina poplar. Useful where a quick growing tree is desired.

POPULUS NIGRA ITALICA. Lombardy Poplar. Tall spire like outline. Good for screens.

POPULUS SAUVEOLENS. Mongolian Poplar. A quick growing tree with dense maple like head. Holds leaves until frost.

PRUNUS CERASIFERA. J. H. Veitch. Double rose flowering cherry. Double rose colored blooms in clusters.

QUERCUS COCCINEA. Scarlet Oak. Strong grower; good fall coloring. Shiny green foliage.

QUERCUS PHELLOS. Willow Oak. Leaves long and entire like the willow. Retain their green color late.

QUERCUS ROBUR. English Oak. Makes an immense tree with wide spreading branches and good foliage.

QUERCUS RUBRA. Red Oak. Quick grower. Rich autumn colors.



ORIENTAL PLANE

ROBINIA PSEUDOCACIA. Locust. Bright green leaves and fragrant flowers in May.

SALIX BABYLONICA. Babylonian Weeping Willow. Probably the best of the weepers.

SALIX CAPREA. Pussy Willow. Large purplish catkins in early spring.

SALIX INCANA. Rosemary Willow. A shrubby willow of good form and sharp narrow grayish leaves.

SALIX PENTANDRA. Laurel Leaved Willow. Lustrous light green leaves. Very attractive.

SALIX VITELLINA AUREA. Golden Willow. Grows into a good sized tree with golden bark. Conspicuous in winter.

SORBUS AUCUPARIA. European Mountain Ash. A valuable small tree with orange colored fruits.

TILIA AMERICANA. American Linden...A large growing tree with large heart shaped leaves. Open head. Yellow flowers.

TILIA VULGARIS. Common Linden. Medium size tree with round head.

ULMUS AMERICANA. American Elm. Fairly rapid growth. Branches somewhat pendulous. Attains large size.

ULMUS GLABRA. Scotch Elm. More upright in growth than the preceding. Not quite so large at maturity.

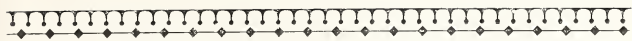




A SOUTHERN HOME

Prices of Deciduous Trees

Acer Dasycarpum	each	10
6 to 8 feet	1.00	9.00
8 to 10 feet	1.50	12.50
Acer Negunda, 6 to 8 feet	1.00	9.00
Acer Platanoides		
6 to 8 feet	2.00	17.50
8 to 10 feet	3.50	
Acer Rubrum		
8 to 10 feet	2.00	
10 to 12 feet	3.50	
Acer Saccharum		
6 to 8 feet	2.00	17.50
8 to 10 feet	3.00	
Aesculus Hippocastanum, 6 to 8 feet	2.00	
Amygdalus Persica, 2 to 3 feet	.60	
Betula Alba,	2.50 to 5.00	
Catalpa Bungeii	1.50 to 2.50	
Celtis Occidentalis		
5 to 6 feet	.75	6.00
6 to 8 feet	1.00	9.00
Cornus Floridus		
3 to 4 feet	.75	6.00
4 to 5 feet	1.00	9.00
5 to 6 feet	1.25	11.00
Cornus Floridus Rubra		
2 to 3 feet	2.00	
3 to 4 feet	2.50	
4 to - feet	3.50	
Fagus Sylvatica		
4 to 5 feet	2.50	20.00
5 to 6 feet	3.50	30.00
Fagus Sylvatica Rivers		
3 to 4 feet	2.50	
4 to 5 feet	2.50	
Fagus Sylvatica Fern Leaf, 3 to 4 feet	2.50	
Fagus Sylvatica Weeping, 3 to 4 feet	2.50	
Fraxinus Americana		
8 to 10 feet	1.50	
10 to 12 feet	2.00	
Fraxinus Ornus Flowering		
4 to 6 feet	.75	6.00
6 to 8 feet	1.25	
Ginkgo Biloba, 5 to 6 feet	1.00	
Larix Leptolepis, Japanese Larch		
2 to 3 feet	.75	
3 to 4 feet	1.00	



	each	10
Liquidamber, Gum, 3 to 4 feet	1.50	
Liriodendron		
4 to 6 feet	1.00	
6 to 8 feet	1.50	
Malus, Flowering Crab		
2 to 3 feet	1.00	
3 to 4 feet	1.50	
Morus Alba		
5 to 6 feet75	6.00
Morus Alba, Weeping,	2.00 to 3.00	
Platanus Orientalis		
8 to 10 feet	1.50	
8 to 10 feet X.....	2.00	
10 to 12 feet	3.00	
10 to 12 feet X.....	4.00	
Populus Alba		
6 to 8 feet	1.00	
8 to 10 feet	1.50	
Populus Monilifera		
8 to 10 feet	1.00	7.50
10 to 12 feet	1.50	12.50
Populus Nigra Italica		
5 to 6 feet75	6.50
6 to 8 feet	1.00	9.00
Populus Mongolian		
6 to 8 feet75	6.00
8 to 10 feet	1.50	12.50
Prunus, Flowering Cherry		
2 to 3 feet	2.00	
3 to 4 feet	3.00	
Quercus Robur		
8 to 10 feet	2.00	
10 to 12 feet	3.50	
Quercus Coccinea		
8 to 10 feet	2.00	
10 to 12 feet	3.50	
Quercus Phellos		
8 to 10 feet	1.50	
10 to 12 feet	3.00	
Robinia, Locust		
6 to 8 feet75	
8 to 10 feet	1.50	
Salix Babylonica		
5 to 6 feet75	6.50
6 to 8 feet	1.00	9.00
Salix Caprea		
3 to 4 feet50	4.00
4 to 5 feet75	6.50
Salix Incana		
3 to 4 feet50	4.00
4 to 5 feet75	6.50
Salix Pentandra		
3 to 4 feet50	4.00
4 to 5 feet75	6.50
Salix Vitellina Aurea		
3 to 4 feet50	4.00
4 to 5 feet75	6.50
Sorbus, Mountain Ash		
4 to 5 feet	1.00	9.00
8 to 10 feet	1.50	12.50
Tilia Americana		
4 to 6 feet	1.00	
6 to 8 feet	1.50	
Tilia Vulgaris, 6 to 8 feet	1.50	
Ulmus Americana		
5 to 6 feet	1.00	9.00
6 to 8 feet	1.50	12.50
Ulmus Glabra		
8 to 10 feet	1.50	12.50
10 to 12 feet	2.00	17.50



CUMBERLAND NURSERIES

MILLVILLE, NEW JERSEY